



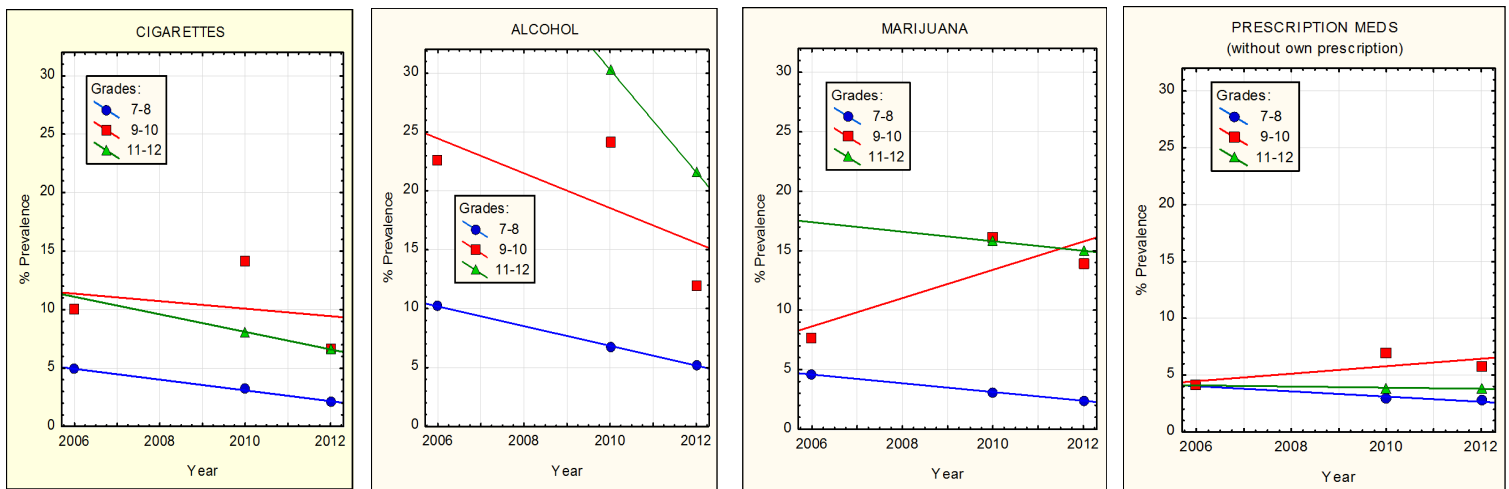
## Recent Survey Results Conducted by the NLCCC

### 2012 New London Youth Survey Report Summary

Over 600 New London youth in grades 7-12 were surveyed for the third time (previously in 2006 and 2010) to ask about substance use and personal perceptions and practices. Three of the primary purposes of the ongoing survey program is to gauge the degree of overall prevention efforts in the community, assist in selecting or designing programs which address youth who are most at risk, and see trends in substance teen use.

#### Reported Substance Use

- Reported recent use (use within 30 days prior to survey) of cigarettes and alcohol has continued to decline among New London youth. Marijuana use has also declined among younger (7th and 8th grades) and older (11th and 12th grades) youth.
- Youth in grades 9 and 10 appear to be the higher risk group, reporting increases in marijuana use since 2006, which is similar to national figures.
- Use of prescription drugs without one's own prescription was very low in New London.
- The use of illicit drugs other than marijuana by all youth surveyed has increased.
- Youth who report recent use of alcohol are much more likely to also use other substances.



#### Why New London Youth Choose to Use substances

- Peer pressure, having fun, curiosity, and relieving stress were the top reasons
- Highest prevalence of 30 day use are associated with lack of disapproval of use by friends and parents
- Influence of friends seems to be a stronger deterrent than influence of parents, or even the perception of personal harm

### Free On-Line Seller-Server Training

The NLCCC has 50 T.I.P.S. training classes that can be used on your personal computer. You must live or work in a New London business that sells or serves alcohol. Call us at 860-442-1497 and give us some basic information and we will provide you with an access number for the free training. Go to the TIPS website, put in the course number, take the class and when complete you will get a printable certificate.

## 2012 New London Community Survey Report Summary

612 adult community members were asked to respond to questions regarding youth substance use in New London. Parents and guardians were asked to respond to questions regarding their oldest school-age child, and nonparent community members were asked to respond to all remaining questions. The questions in the survey are worded, where appropriate to be equivalent to questions in the youth survey. Respondents were asked to answer questions regarding age of their oldest school-age child, their age, gross household income (above or below \$35,000/year), and race/ ethnicity of the child. A similar survey was given to the New London community in 2008 and 2010.

### After School Activities

- Middle school youth (grades 6-8) were most active in activities, except for tutoring in school subjects
- African-American children were somewhat less likely to be involved in any activities
- Children of higher income families were more likely to receive lessons in art, dance, etc., and to receive tutoring
- Most children were involved in activities at their own school, and there were some differences in location associated with ethnicity and income
- Youth who parents said do not drink engaged in about 30% more after school activities than youth who drink, and activities were more diverse

### Adult Community Member's Perception of Youth Substance Use

- 15% parents of youth in grades 11-12 reported that alcohol was consumed in their homes by underage youth
- Parent estimates of youth alcohol consumption were very close to youth reports.
- The main uncertainty among parents appeared to be in estimating youth marijuana use
- 17% of parents think teens should be allowed to drink, to teach responsibility 23% of nonparent adults of all ages felt that some teen drinking is acceptable
- There were differences in opinions of teen drinking related to age of child, ethnicity, and family income
- Parents of high school students were asked "In the past 30 days, I think my child probably drank an alcoholic beverage, more than just a sip." There were 20 True and 91 False boxes checked

### Parent Rules and Attitudes Toward Youth Substance Use

Majority of youth who drink do so in the home, according to parents. Most families have rules discouraging cigarette smoking. Families of youth who use alcohol were more permissive towards drinking and use of marijuana, less convinced of the harmfulness of either substance, and more likely to support allowing some teen drinking. Accessibility to all substances was judged by parents to be higher among youth who drink. Fewer parents of youth who drink claimed to know "a lot about effects of alcohol on a teen's mental and physical development"

*For more information or access to the full 2012 New London Youth and Community Survey reports please call the NLCCC at 860-442-1497 or e-mail [nlccc@ci.new-london.ct.us](mailto:nlccc@ci.new-london.ct.us)*

#### NLCCC Mission:

*"To engage the City of New London to combat risky behaviors by promoting healthy, vibrant, and productive lifestyles for our teen community."*



120 Broad Street  
New London, CT 06320  
Phone: 860-442-1497

Place Mailing Label Here

Place  
Stamp  
Here

